

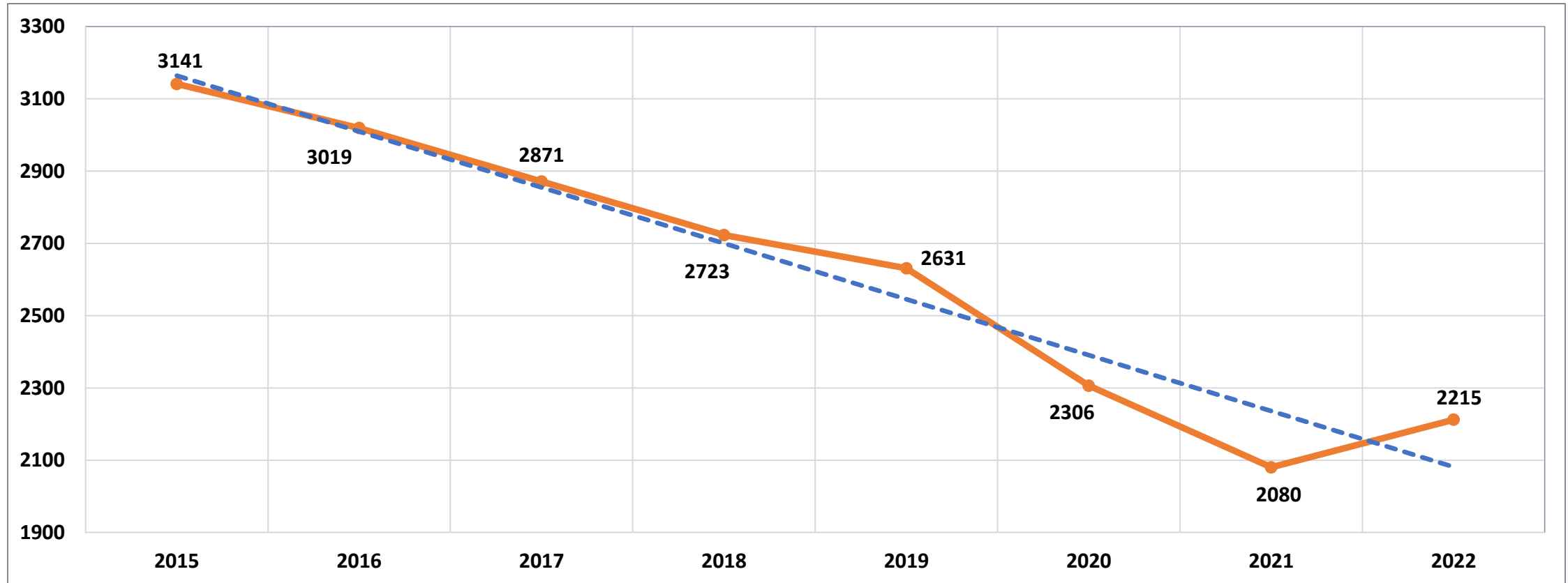
# Rhode Island Department of Corrections

## Calendar Year 2022 Population Update

Acting Director Wayne T. Salisbury, Jr.



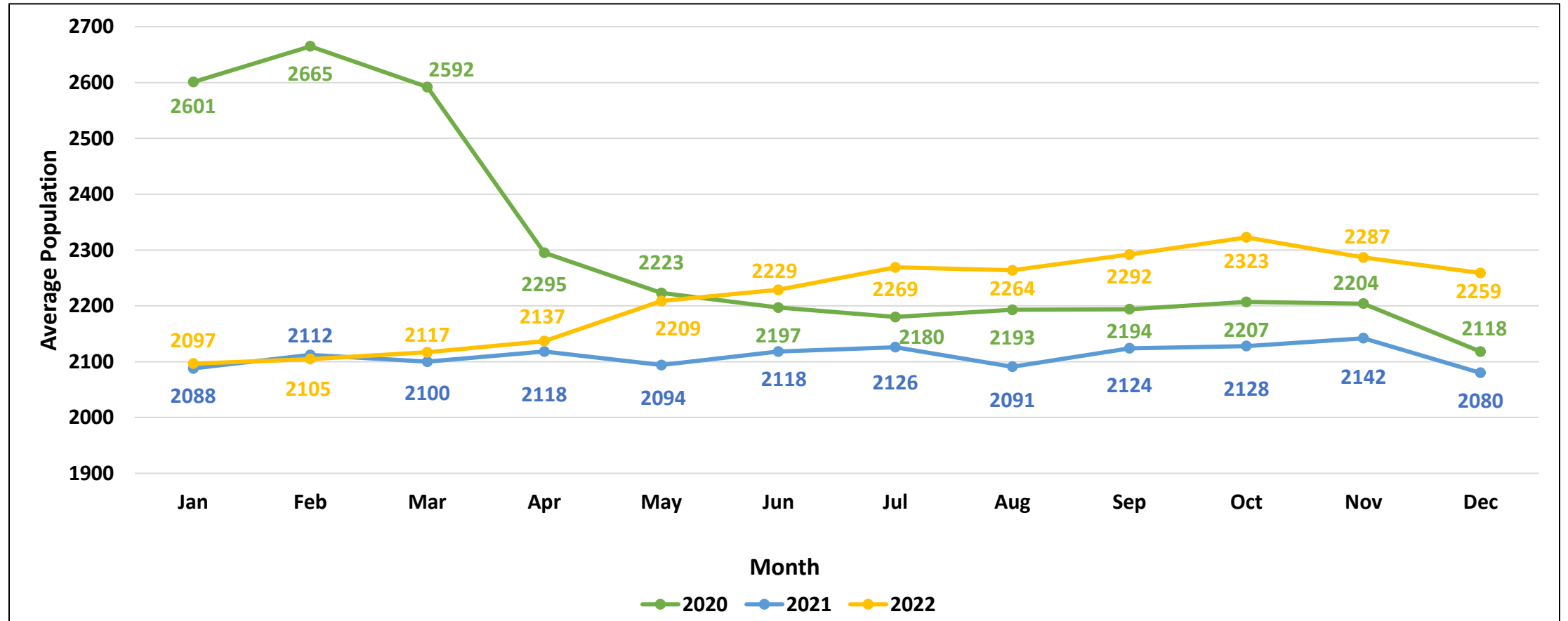
## Average Total Population CY2015-2022



- RIDOC's average total population in CY22 was 2,215, which was a 29% decrease from CY15's population of 3,141.

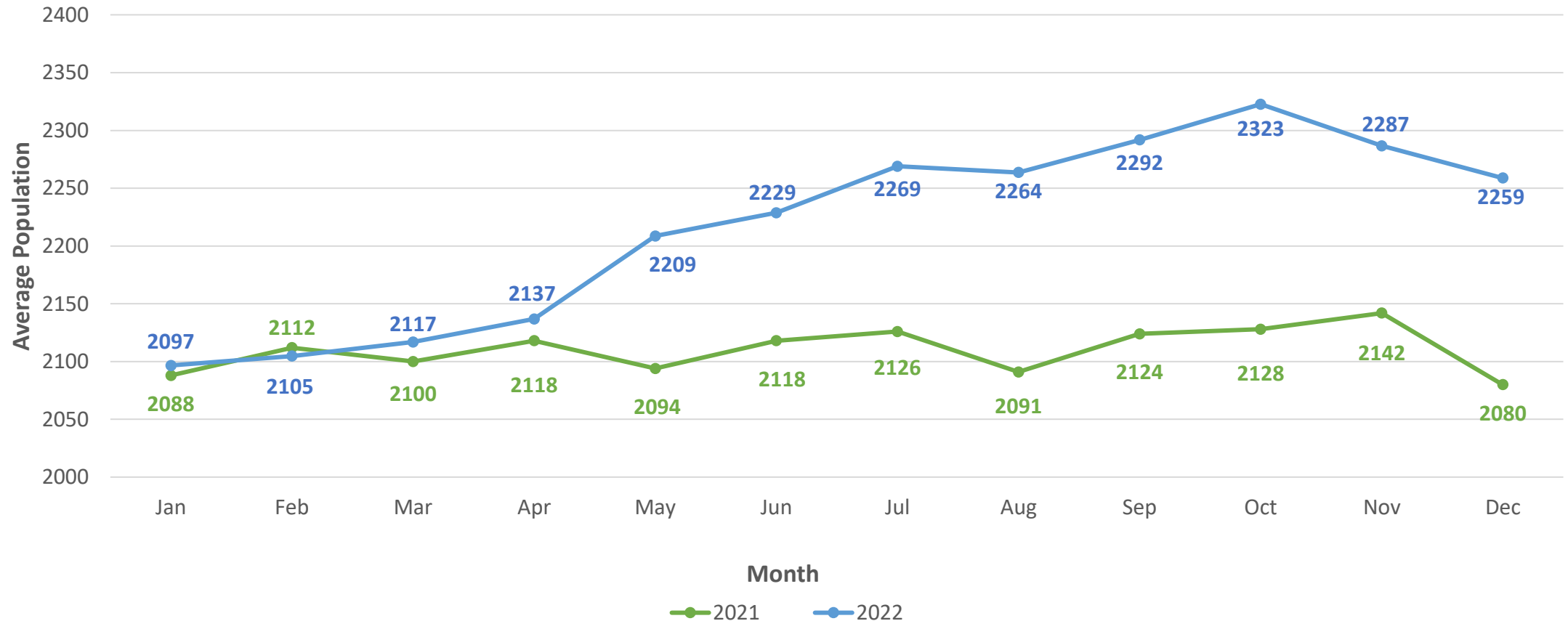
**Data Caveat:** Please note RIDOC's average total population excludes offenders who are serving a RI sentence out-of-state in accordance with the Interstate Compact, at the Eleanor Slater Hospital Forensic Unit, or on Home Confinement.

## Average Total Population by Month Calendar Years 2020-2022



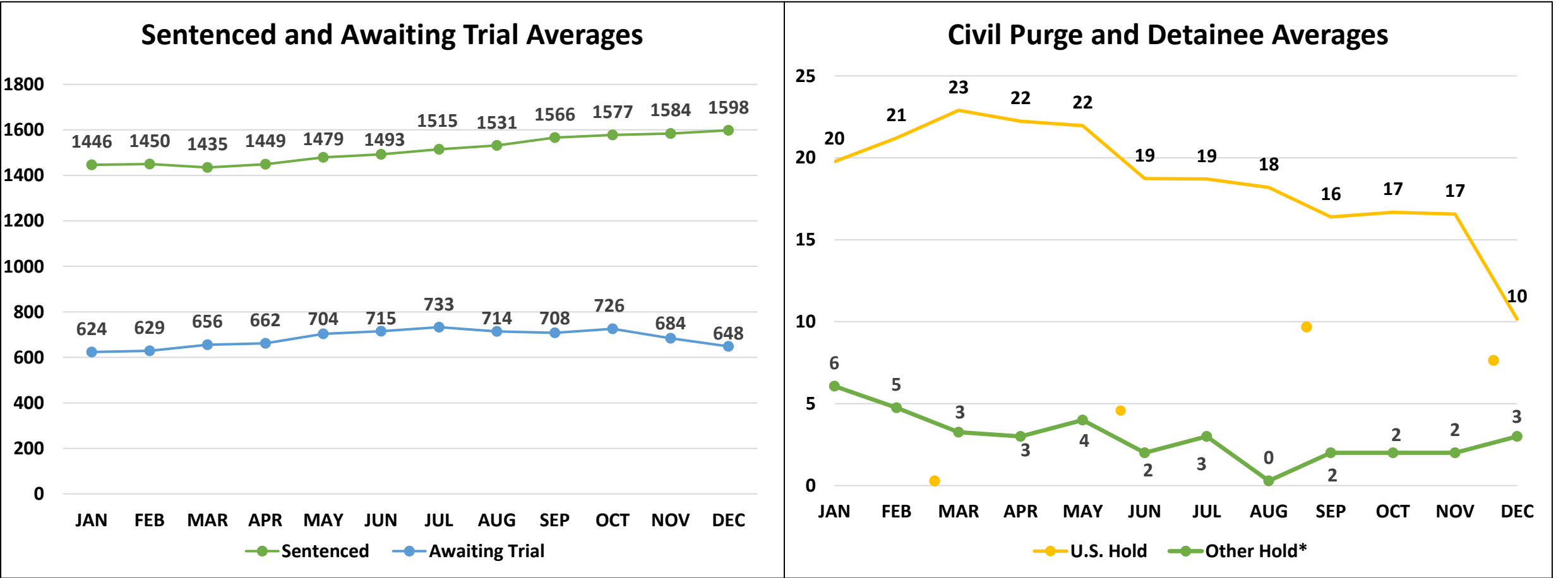
- During the first wave of COVID-19, RIDOC's monthly commitments decreased by just over 74% from February (1084) to April 2022 (279) while RIDOC's average monthly population decreased by nearly 14%. RIDOC's average monthly population stabilized in 2021, with just a 0.4% percent change from January (2088) to December (2080). From January (2097) to July (2269) of 2022, RIDOC's average monthly population increased by just over 8% while monthly commitments increased by just over 26% (January commitments 747; July commitments 943).

# Average Total Population by Month Calendar Years 2021-2022



- In CY22, RIDOC had a higher average monthly population in all but one month (February) when compared to CY21. The average total population of CY22 (2,216) was 5% higher than CY21 (2,110).

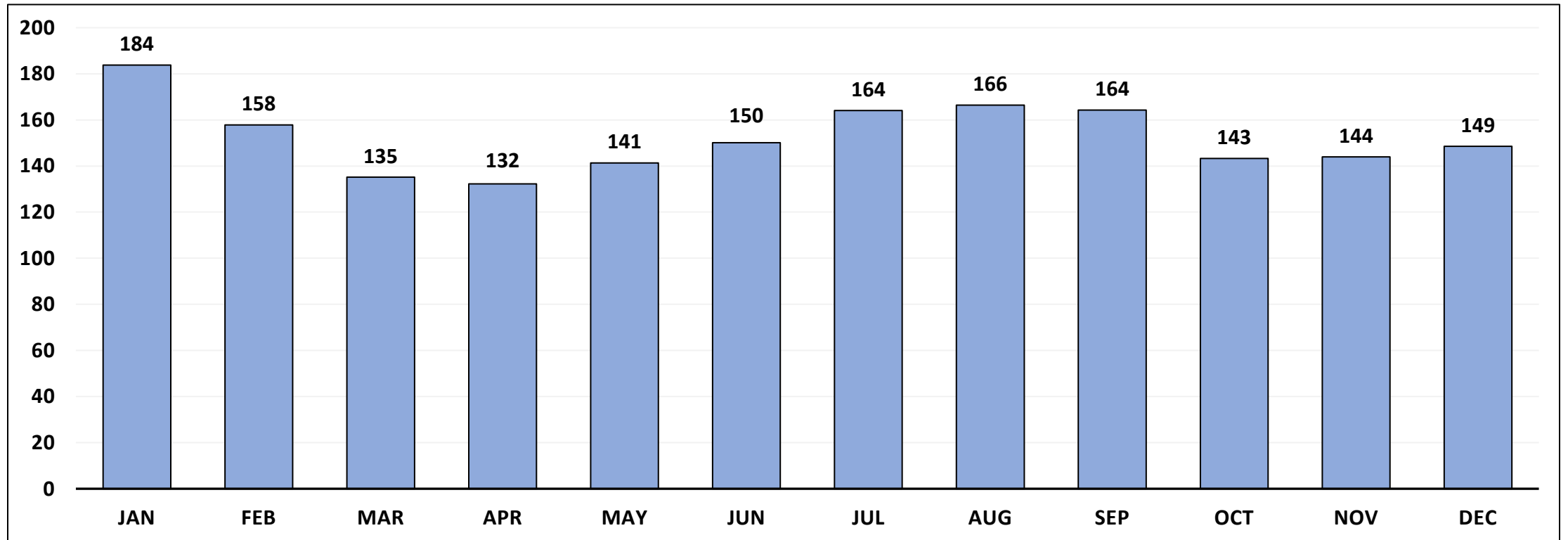
# CY22 Average Sentenced, Awaiting Trial, Civil Purge, and Detainee Populations



\*Other hold(s) to include civil purge, which refers to those in RIDOC custody for non payment of court ordered amounts or costs.

**Data Caveat:** These numbers are valid as of the last date of the corresponding month. Please note that “Other Hold” includes holds for other states and holds for military.

# Average Monthly Sentenced Population at Intake Service Center (ISC) Calendar Year 2022

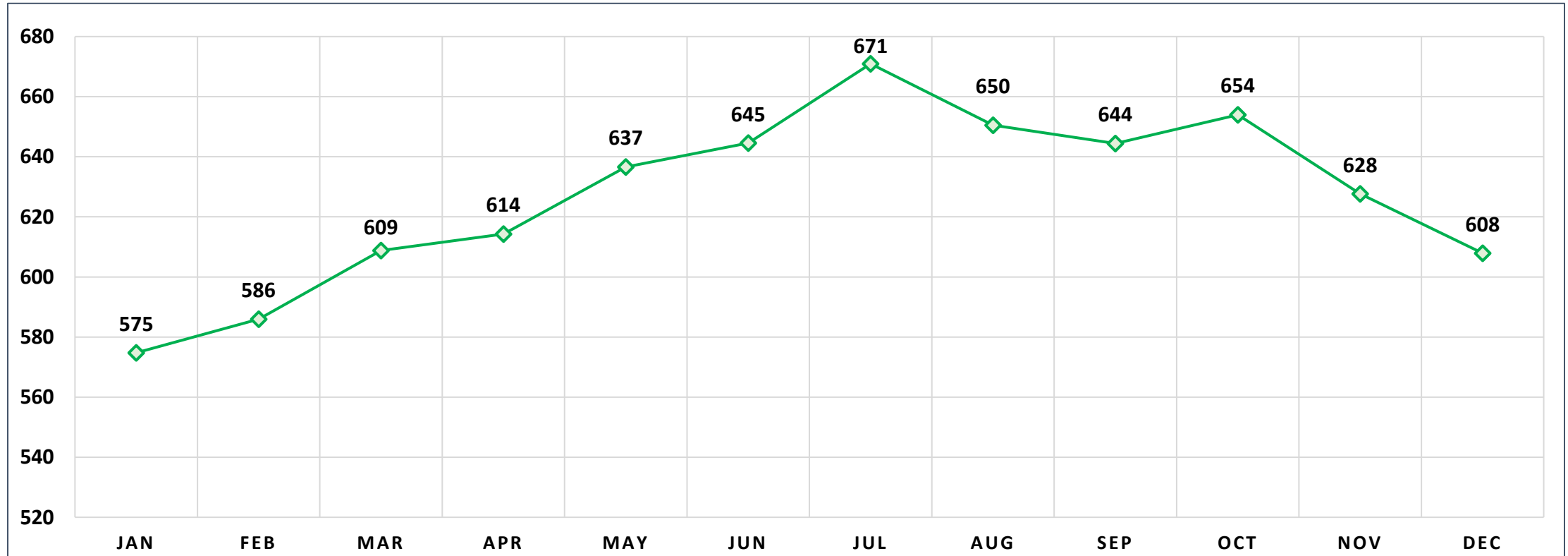


- In CY22, the average length of stay (LOS) for all sentenced release events from RIDOC's Intake Service Center was just over 62 days, whereas the median LOS was 30 days. Nearly 67% of sentenced releases had a LOS of 45 days or less. An additional 13% had an LOS of 46 to 60 days. Nearly 89% of sentenced releases had a LOS of 90 days or less.

**\*Data Caveat:** Pursuant to Rhode Island General Laws § 42-56-29, § 42-56-30, § 42-56-31, and § 42-56-32, any sentenced male offender shall be admitted to the Intake Service Center.



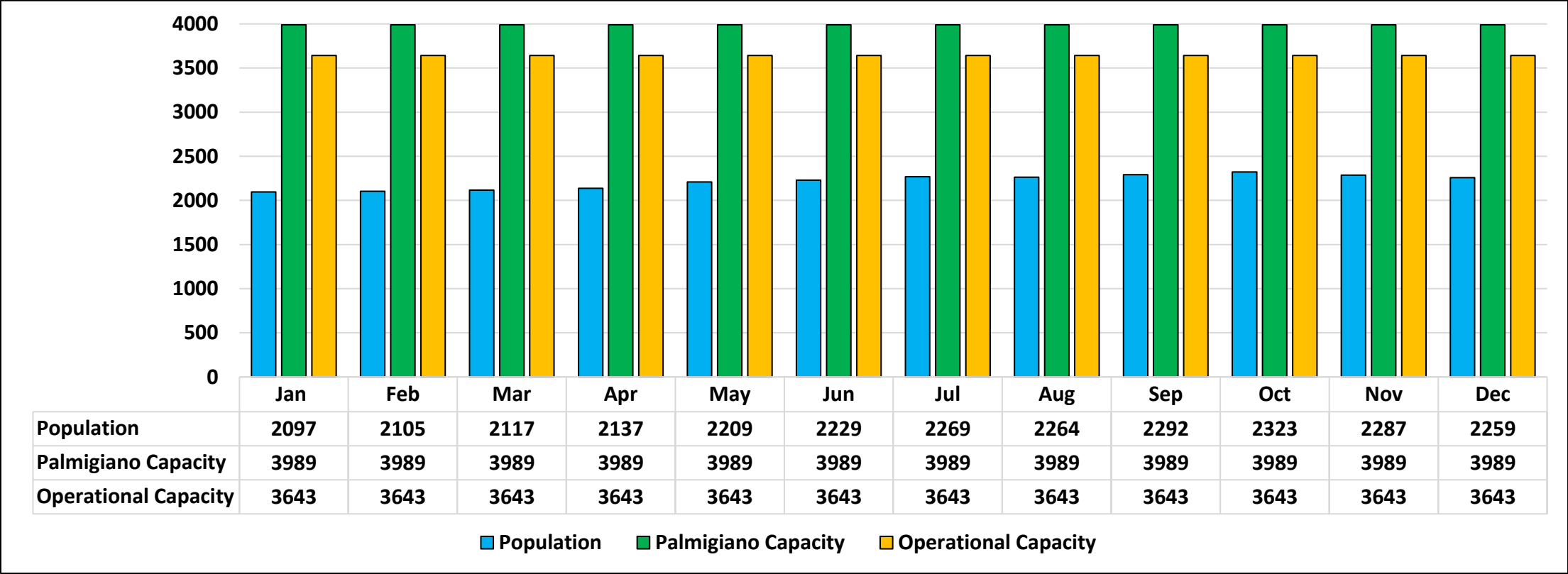
# Average Monthly Awaiting Trial Population at Intake Service Center (ISC) Calendar Year 2022



- In CY22, the awaiting trial population at ISC steadily increased by 17% from January to July. Then from August through the end of the year there was a steady decrease of 7% in the average monthly awaiting trial population. In CY22, awaiting trial releases from RIDOC's Intake Service Center had an average length of stay (LOS) is about 29.5 days, whereas the median LOS is 5 days. About 15% were committed and released on the same day, whereas 47% of awaiting trial releases had an LOS of 3 days or less. An additional 6% had a LOS of between 4 and 7 days. Nearly 80% of awaiting trial releases had an LOS of 30 days or less.

**\*Data Caveat:** The figures highlighted in the line graph (above) do not include civil, U.S., or other holds.

# Average Monthly Total Population with Palmigiano and Operational Capacities CY22



- RIDOC’s average total population for CY22 was 2,216. This is 61% of RIDOC’s Operational Capacity and 56% of the Palmigiano Capacity\*.

\*Palmigiano Capacity: Refers to the capacity established in Federal court which mandates the number of offenders that RIDOC can safely detain. RIDOC’s Palmigiano Capacity is calculated with a formula that utilizes the total number of available beds.



Average Probation & Parole  
Population  
Calendar Year 2022



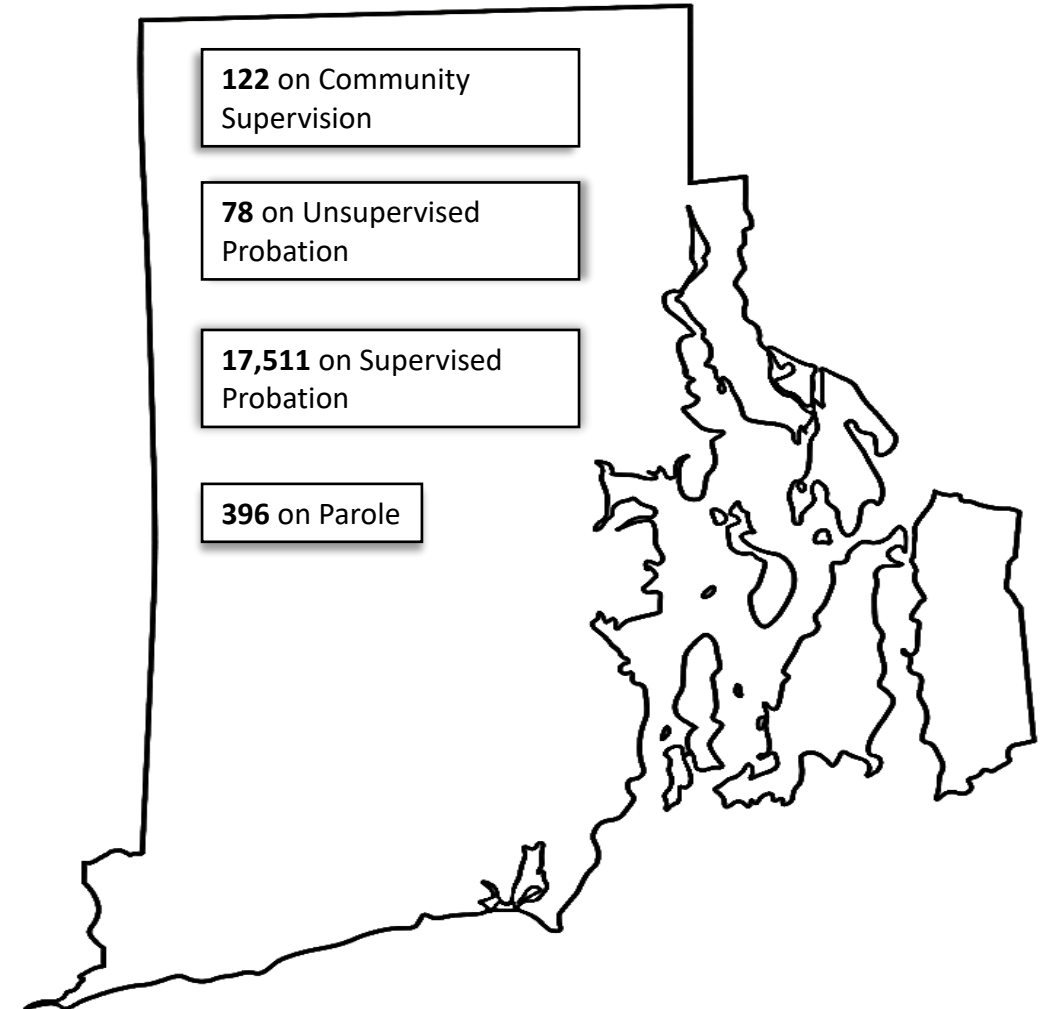
MISSION AND VISION

PROBATION AND PAROLE

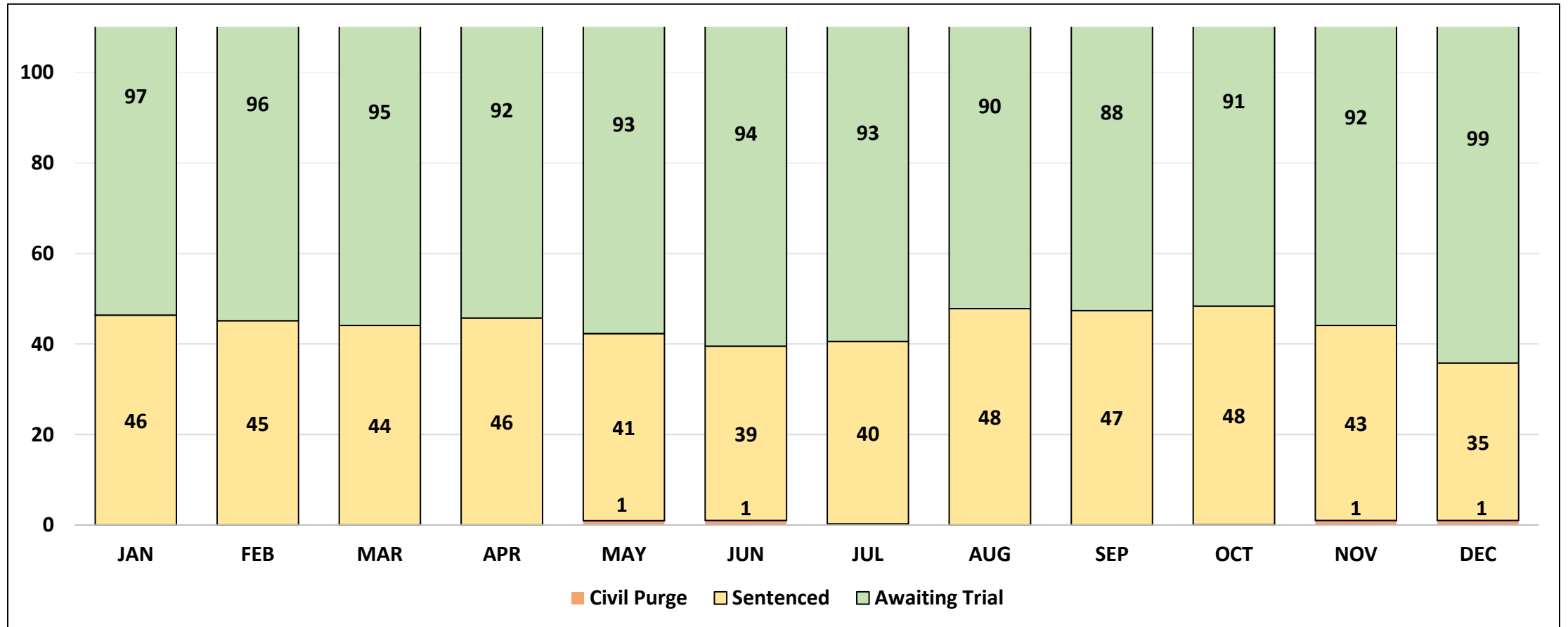
THE RHODE ISLAND DEPARTMENT OF CORRECTIONS  
PROBATION AND PAROLE UNIT WILL INCREASE PUBLIC  
SAFETY BY PROMOTING POSITIVE CHANGE IN OFFENDER  
BEHAVIOR, SUCCESSFULLY REINTEGRATING OFFENDERS  
INTO SOCIETY AND ASSISTING VICTIMS OF CRIME WHILE  
UPHOLDING OUR CORE VALUES AND ETHICS

TO REDUCE CRIME, RECIDIVISM AND VICTIMIZATION BY  
MOTIVATING OFFENDERS TO BECOME PRODUCTIVE AND  
LAW-ABIDING MEMBERS OF SOCIETY

## How Many Rhode Island Residents are on Probation and Parole?

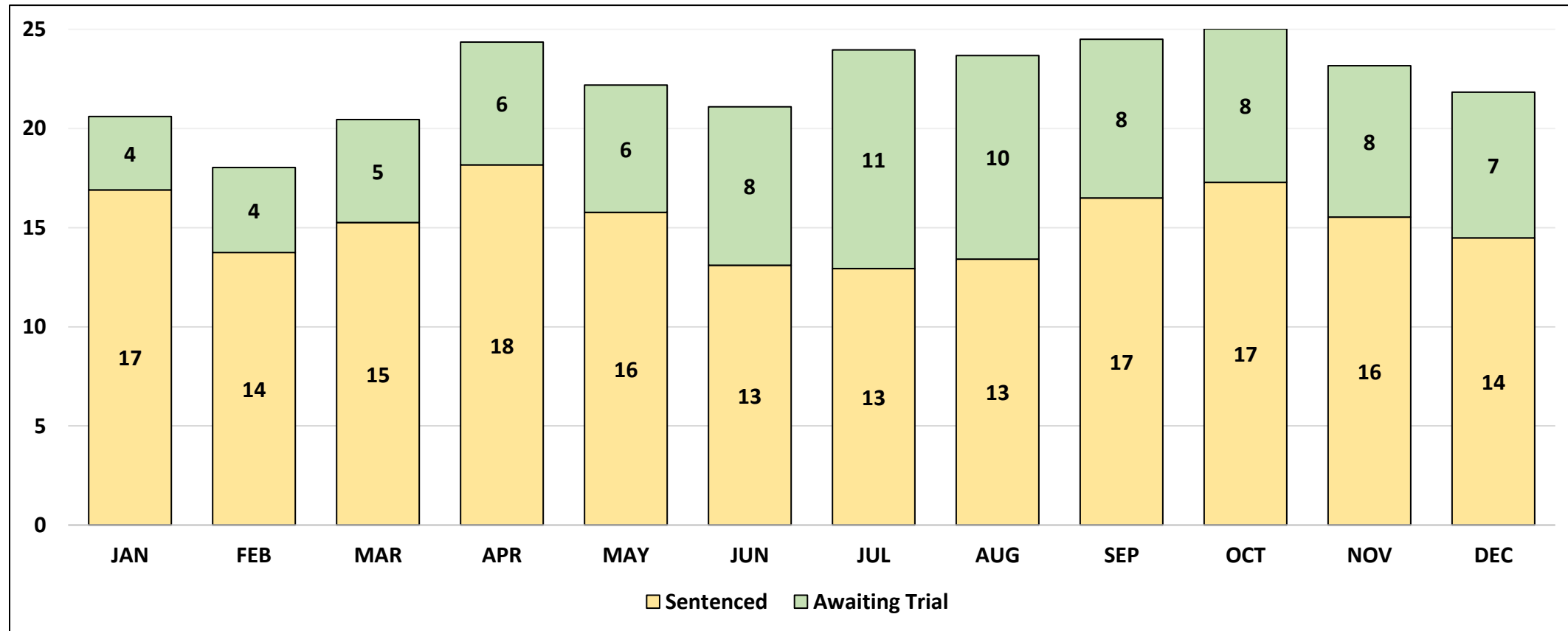


# Home Confinement Calendar Year 2022 - Males



- In CY22, the average number of all male offenders on home confinement was 137.

## Home Confinement Calendar Year 2022 - Females



- In CY22, the average number of female offenders on home confinement was 22.

# Offenders Serving a Life Sentence at RIDOC

## **As of December 31<sup>st</sup>, 2022:**

RIDOC had 178 offenders serving life with the possibility of parole in RIDOC facilities.

### **Out of the 178:**

- 46% were housed at Maximum Security
- 38% were housed at Medium Security
  - 9% were housed at High Security
    - 5% were housed at Intake
  - 2% were housed at Women's

## **As of December 31<sup>st</sup>, 2022:**

RIDOC had 25 offenders serving life without the possibility of parole in RIDOC facilities.

### **Out of the 25:**

- 84% of these offenders were housed at Maximum Security
- 8% were housed at High Security
- 4% were housed at Medium Security
  - 4% were housed at Intake